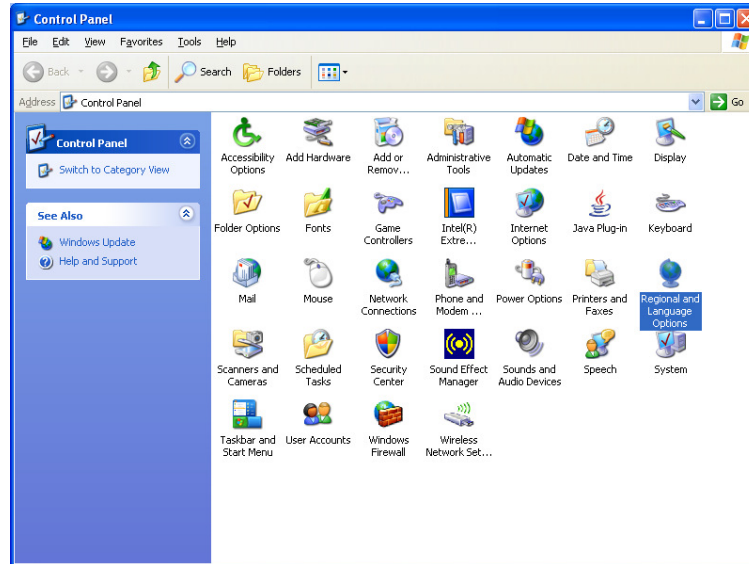


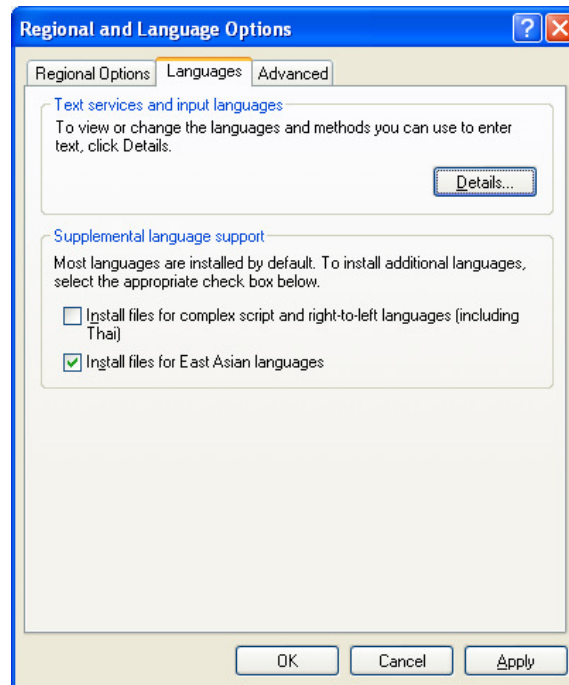
Windows XP Chinese Character Support Installation Instruction

Windows XP has a utility to allow user to modify language sets for both multi-language input and viewing of foreign character sets. This document outlines the steps for installing Chinese Character Support on a computer running Windows XP.

- 1) At the Window Taskbar, click **Start > Settings > Control Panel** and the following window will be displayed.



- 2) Click on the [Regional and Language Options] icon. The Regional and Language Options window will be launched. Next, click the [Languages] tab to display the window as shown.

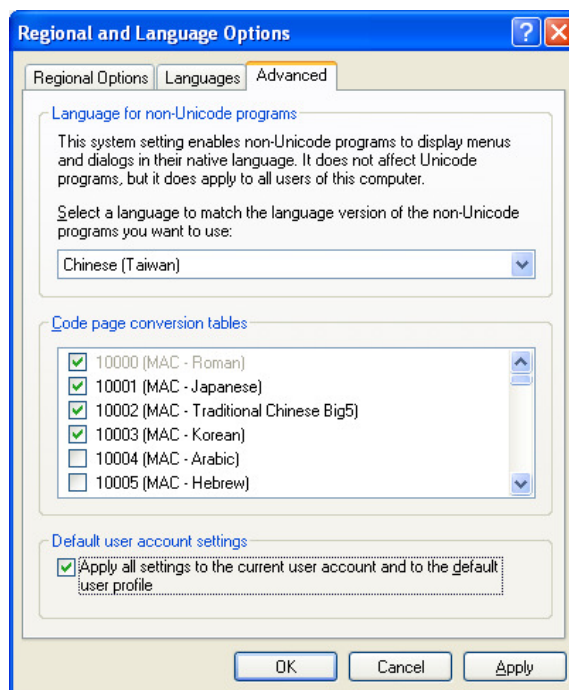


- 3) Check the [Install files for East Asian languages] check-box. The following warning message will pop up.



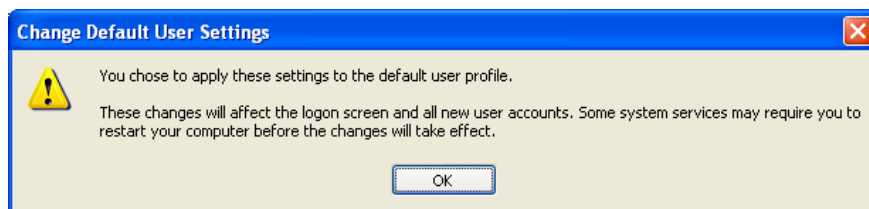
Click on the [OK] button to close the above message window, and the system will copy the needed East Asian Font files to the Windows System folder. If the system prompts for the insertion of the original Windows CD-ROM or to supply an alternate location where the needed files reside, follow the screen instructions to complete the rest of the installation.

- 4) Click the [Advanced] tab to display the window as shown.



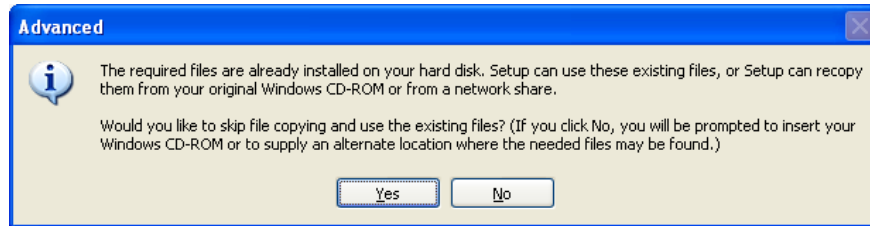
Choose [Chinese (Taiwan)] from the language list box in the Language for non-Unicode programs frame.

Check the [Apply all settings to the current user account and to the default user profile] check-box. The following warning message will pop up.

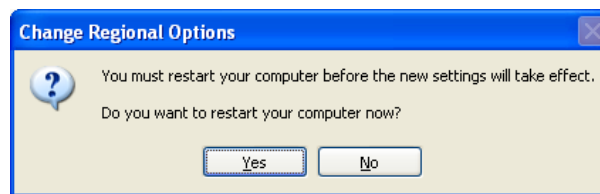


Click on the [OK] button to close the above warning message.

- 5) Click on the [OK] button in the Regional and Language Options Window, and the following information message will pop up.



Click on the [Yes] button and the above information box will be closed. After which the system will copy the needed files for updates and perform change of settings. On completion of the updates and change of settings, the following information window will be displayed.



Click the [Yes] button to restart your computer. The new settings will take effect after the restart. Now your Windows System will be able to display Chinese Character and also to provide Microsoft Pinyin IME 2003 to input Chinese Character.

- 6) Configuration Microsoft IME 2003 for Chinese Character Input.

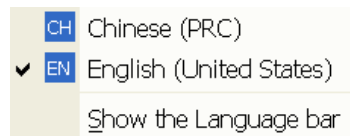
Follow the steps as outlined below to configure the Chinese input method.

Step 1: Login to Windows XP desktop.

At the bottom right corner of your screen, (where the clock is) you will see the **input locale switcher** [EN]. This icon allows you to switch between your input installed input locales.



Click on the **input locale switcher** [EN] on the Windows XP toolbar to reveal its pop-up menu:



Select the [[Show the Language bar](#)] menu item. The Language bar as shown below will be launched.



Step 2: Click on the [EN English (United States)] button.

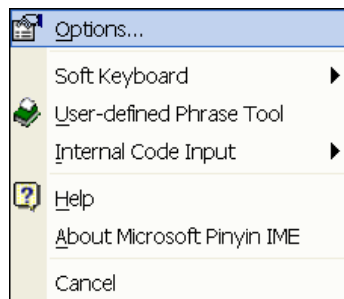


From the drop-down menu, select the [Chinese (PRC)] menu item. The Language bar will be expanded as shown below.

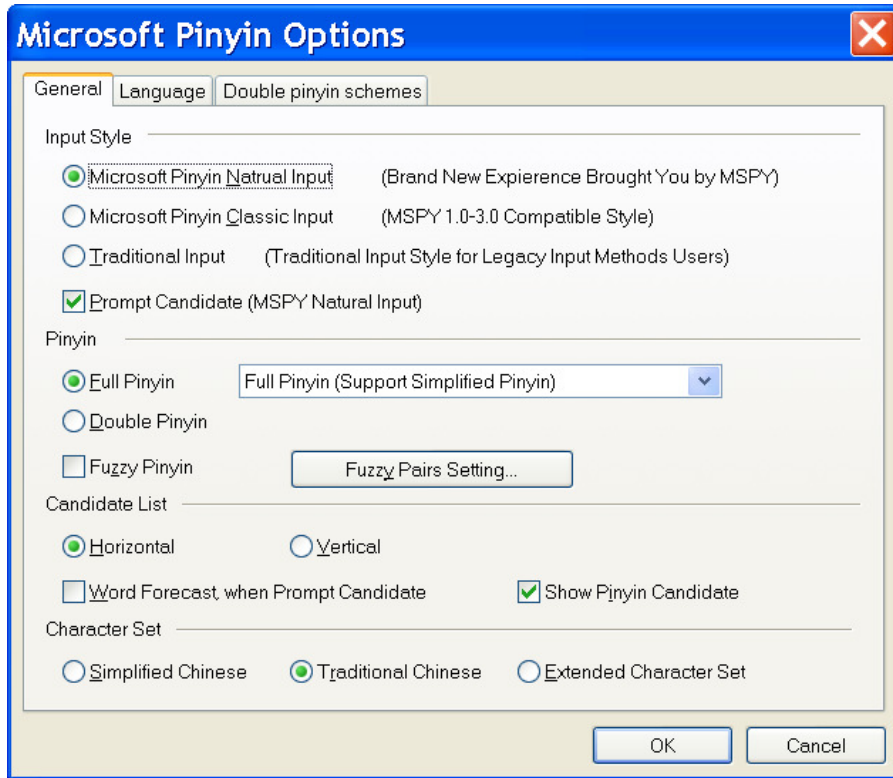


MSIME Menu Button

Step 3: Click on the MSIME [Menu] button to display the following menu.



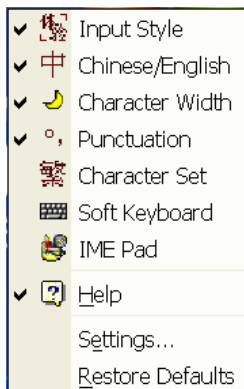
Select menu item [[Options...](#)] to launch the Microsoft Pinyin Options window.



Step 4: Change the default settings to match those as shown in the above Microsoft Pinyin Options window. Click on the [OK] button to save the changes.



Step 5: Click on the MSIME [Options] arrow button to display the following menu.



MSIME Options Button

Step 6: Select the [繁 Character Set] menu item and the language bar layout will be changed as shown below.



With the completion of the above configuration, the system is now ready to input in Chinese characters in BIG5 code (traditional Chinese codes).